

HTML 5

Tag	Info	V	Attributes*
<!-- -->	comment	4 / 5	none
<!DOCTYPE>	document type	4 / 5	none
<a>	hyperlink	4 / 5	href hreflang media ping rel target type
<abbr>	abbreviation	4 / 5	global attributes**
<acronym>	acronym	4	-
<address>	address element	4 / 5	global attributes**
<applet>	applet	4	-
<area>	area inside an image map	4 / 5	alt coords href hreflang media ping rel shape target type
<article>	article	5	global attributes**
<aside>	outside the main flow of the narrative	5	global attributes**
<audio>	sound content	5	autobuffer autoplay controls loop src
	bold text	4 / 5	global attributes**
<base>	base URL for all the page links	4 / 5	href target
<basefont>	Base font for the document	4	-
<bb>	invoked user agent com-	5	type
<bdo>	direction of text display	4 / 5	dir
<big>	big text	4	-
<blockquote>	long quotation	4 / 5	cite
<body>	body element	4 / 5	global attributes**
 	inserts a single line break	4 / 5	global attributes**
<button>	push button	4 / 5	autofocus disabled form formaction formenctype formmethod formnovalidate formtarget name type value
<canvas>	Graphic area	5	height width
<caption>	table caption	4 / 5	global attributes**
<center>	centered text	4	-
<cite>	citation	4 / 5	global attributes**
<code>	computer code text	4 / 5	global attributes**
<col>	attributes for table columns	4 / 5	span
<colgroup>	groups of table columns	4 / 5	span
<command>	command button	5	checked default disabled hidden icon label radiogroup type
<datagrid>	data in a tree, list or tabular	5	disabled
<datalist>	dropdown list	5	global attributes**
<dd>	definition description	4 / 5	global attributes**
	deleted text	4 / 5	cite datetime
<details>	details of an element	5	open
<dialog>	dialog (conversation)	5	global attributes**
<dir>	directory list	4	-
<div>	section in a document	4 / 5	global attributes**
<dfn>	definition term	4 / 5	title
<dl>	definition list	4 / 5	global attributes**
<dt>	definition term	4 / 5	global attributes**
	emphasized text	4 / 5	global attributes**

Tag	Info	V	Attributes*
<embed>	external interactive content or plugin	5	height src type width
<fieldset>	fieldset	4 / 5	disabled form name
<figure>	group of media content, and their caption	5	global attributes**
	text font, size, and color	4	-
<footer>	footer for a section or page	5	global attributes**
<form>	form	4 / 5	action data replace accept accept-charset enctype method target
<frame>	sub window	4	-
<frameset>	set of frames	4	-
<h1> to <h6>	header 1 to header 6	4 / 5	global attributes**
<head>	Information about the document	4 / 5	none
<header>	header for a section or page	5	global attributes**
<hgroup>	heading section	5	global attributes**
<hr>	horizontal rule	4 / 5	global attributes**
<html>	html document	4 / 5	manifest
<i>	italic text	4 / 5	global attributes**
<iframe>	inline sub window (frame)	4 / 5	src name sandbox seamless width height
	image	4 / 5	alt src height ismap usemap width
<input>	input field	4 / 5	accept alt autocomplete autofocus checked disabled form formaction formenctype formmethod formnovalidate formtarget height list max maxlength min multiple name pattern placeholder readonly required size src step type value width
<ins>	inserted text	4 / 5	cite datetime
<isindex>	single-line input field	4	-
<kbd>	keyboard text	4 / 5	global attributes**
<label>	label for a form control	4 / 5	for
<legend>	fieldset title	4 / 5	global attributes**
	list item	4 / 5	value
<link>	resource reference	4 / 5	href rel media hreflang type sizes
<mark>	marked text	5	global attributes**
<map>	image map	4 / 5	id
<menu>	menu list	4 / 5	label type
<meta>	meta information	4 / 5	charset content http-equiv name
<meter>	measurement within a predefined range	5	high low max min optimum value
<nav>	navigation links	5	global attributes**
<noframes>	noframe section	4	-
<noscript>	noscript section	4 / 5	none
<object>	embedded object	4 / 5	data height type usemap width object

* **Attributes:** Lists attributes specific to that tag. Deprecated (html4 only) attributes are not listed
**** Global Attributes:** class | contenteditable | contextmenu | dir | draggable | id | irrelevant | lang | ref | registrationmark | tabindex | template | title

Tag	Info	V	Attributes*
	ordered list	4 / 5	start reversed
<optgroup>	option group	4 / 5	disabled label
<option>	option in a drop-down list	4 / 5	disabled label selected value
<output>	some types of output	5	form
<p>	paragraph	4 / 5	global attributes**
<param>	parameter for an object	4 / 5	name value
<pre>	preformatted text	4 / 5	global attributes**
<progress>	progress of a task of any kind	5	max value
<q>	short quotation	4 / 5	cite
<ruby>	ruby annotations	5	global attributes**
<rp>	provide parentheses around a ruby text	5	global attributes**
<rt>	ruby text component	5	global attributes**
<s>	strikethrough text	4	-
<samp>	sample computer code	4 / 5	global attributes**
<script>	script	4 / 5	async type defer src charset
<section>	section	5	cite
<select>	selectable list	4 / 5	autofocus data disabled form multiple name
<small>	small text	4 / 5	global attributes**
<source>	media resources	5	media src type
	inline section	4 / 5	global attributes**
<strike>	strikethrough text	4	-
	strong text	4 / 5	global attributes**
<style>	style definition	4 / 5	media type scoped
<sub>	subscripted text	4 / 5	global attributes**
<sup>	superscripted text	4 / 5	global attributes**
<table>	table	4 / 5	global attributes**
<tbody>	table body	4 / 5	global attributes**
<td>	table cell	4 / 5	colspan rowspan headers
<textarea>	text area	4 / 5	autofocus cols disabled form name readonly required rows maxlength placeholder wrap
<tfoot>	table footer	4 / 5	global attributes**
<th>	table header	4 / 5	colspan rowspan scope
<thead>	table header	4 / 5	global attributes**
<time>	date/time	5	datetime
<title>	document title	4 / 5	none
<tr>	table row	4 / 5	global attributes**
<tt>	teletype text	4	-
<u>	underlined text	4	-
	unordered list	4 / 5	global attributes**
<var>	variable	4 / 5	global attributes**
<video>	video	5	src poster autobuffer autoplay loop controls width height
<xmp>	preformatted text	4	-

V = Which version of HTML is this tag valid for

HTML 5 - extended

Tag	Info	Attributes
<!-- -->	comment: comments are displayed in code only. Tag contents are not rendered in the browser	none
<!DOCTYPE>	document type: defines which specification the document follows	none
<a>	anchor: used to provide a link to another web resource	href: destination resource of the hyperlink hreflang: gives the language of the linked resource media: describes for which media the target document was designed ping: gives the URLs of the resources that are interested in being notified if the user follows the hyperlink rel: relationship between the document containing the hyperlink and the destination resource [alternate archives author bookmark contact external feed first help icon index last license next nofollow noreferrer pingback prefetch prev search stylesheet sidebar tag up] target: gives the name of the browsing context that will be used [_blank _parent _self _top] type: gives the MIME type of the linked resource
<abbr>	abbreviation: an abbreviation or acronym, optionally with its expansion	global attributes**
<address>	address element: represents the contact information for its nearest article or body element ancestor	global attributes**
<area>	area: either a hyperlink with some text and a corresponding area on an image map, or a dead area on an image map	alt: alternate text for the area coords: coordinates for the clickable area href: destination resource of the hyperlink hreflang: gives the language of the linked resource media: describes for which media the target document was designed ping: gives the URLs of the resources that are interested in being notified if the user follows the hyperlink rel: relationship between the document containing the hyperlink and the destination resource [alternate archives author bookmark contact external feed first help icon index last license next nofollow noreferrer pingback prefetch prev search stylesheet sidebar tag up] shape: defines the shape of the area [default rect rectangle circ circle poly polygon] target: gives the name of the browsing context that will be used [_blank _parent _self _top] type: gives the MIME type of the linked resource
<article>	article element: a section of a page that consists of a composition that forms an independent part of a document, page, or site	global attributes**
<aside>	aside element: a section of a page that consists of content that is tangentially related to the content around the aside element, and which could be considered separate from that content	global attributes**
<audio>	sound content: represents a sound or audio stream	autobuffer: determines if the audio will be buffered [autobuffer] autoplay: determine if the audio will automatically play [autoplay] controls: indicates that the author has not provided a scripted controller and would like the user agent to provide its own set of controls [controls] loop: sets whether the audio will start once the end is reached [loop] src: URL of the audio to play
	bold text: creates text that will be made bold	global attributes**
<base>	base element: base URL for all the page links	href: URL to use as the base URL for links in the page target: sets the base target for links in the page [_blank _parent _self _top]
<bb>	browser button: a user agent command that the user can invoke	type: indicates the kind of command [makeapp]
<bdo>	bdo element: represents explicit text directionality formatting control for its children	dir: direction override [ltr rtl]
<blockquote>	block quote element: a section that is quoted from another source	cite: URL of the origin of the quote
<body>	body element: main content of the document	global attributes**
 	break: inserts a single line break	global attributes**

Tag	Info	Attributes
<button>	button: a button page element	autofocus: indicate that a control is to be focused as soon as the page is loaded [autofocus] disabled: prevents the button from being pressed [disabled] form: used to explicitly associate the button element with its form owner formaction: URL that specifies a form processing agent formenctype: specifies the content type used to submit the form to the server [application/x-www-form-urlencoded multipart/form-data text/plain] formmethod: which HTTP method will be used to submit the forms data [get post put delete] formnovalidate: indicate whether the form is to be validated during submission [formnovalidate] formtarget: gives the target when the form is submitted [_blank _parent _self _top] name: elements name type: controls the behavior of the button when it is activated [submit reset button] value: gives the element's value for the purposes of form submission
<canvas>	canvas element: a resolution-dependent bitmap canvas, which can be used for rendering graphs, game graphics, or other visual images on the fly	height: height of the canvas in pixels - default is 150 width: width of the canvas in pixels - default is 300
<caption>	table caption: the title of the table that is its parent, if it has a parent and that is a table element.	global attributes**
<cite>	citation: represents the title of a work	global attributes**
<code>	computer code text: represents a fragment of computer code. This could be an XML element name, a filename, a computer program, or any other string that a computer would recognize.	global attributes**
<col>	column: defines the attribute values for one or more columns in a table. Used inside of a table or colgroup	span: number of columns the tag should span
<colgroup>	column group: a group of one or more columns in the table that is its parent, if it has a parent and that is a table element	span: number of columns the tag should span
<command>	command button: a command that the user can invoke (like radio button or checkbox)	type: Specifies the type of command [checkbox command radio] label: gives the name of the command, as shown to the user icon: a URL to a picture that represents the command disabled: prevents the command from being executed [disabled] checked: Determines if the command is checked by default [checked] radiogroup: gives the name of the group of commands that will be toggled when the command itself is toggled title: gives a hint describing the command, which might be shown to the user to help them
<datagrid>	datagrid element: an interactive representation of tree, list,	disabled: defines whether the list is selectable [disabled]
<datalist>	dropdown list: a set of option elements that represent predefined options for other controls	global attributes**
<dd>	definition description: description, definition, or value, part of a term-description group in a description list (dl element), and the discourse, or quote, part in a conversation (dialog element)	global attributes**
	deleted text: represents a removal from the document	cite: a URL used to specify the address of a document that explains the change datetime: used to specify the time and date of the change
<details>	details element: represents additional information or controls which the user can obtain on demand	open: indicates whether the details are to be shown to the user [open]
<dialog>	dialog element: represents a conversation, meeting minutes, a chat transcript, a dialog in a screenplay, an instant message log, or some other construct in which different players take turns	global attributes**
<div>	document block: creates a block level element with no special meaning	global attributes**

HTML 5 - extended

Tag	Info	Attributes	Tag	Info	Attributes
<dfn>	definition term: the defining instance of a term	title: the exact value of the term being defined	<input>	input field: a typed data field, usually with a form control to allow the user to edit the data	Attributes are dependant upon input type accept: specified to provide user agents with a hint of what file types the server will be able to accept alt: provides the textual label for the alternative button for users and user agents who cannot use the image autocomplete: determines if the data is considered sensitive and if autocomplete will be used [on off default] autofocus: determines if the input will get focus when a page loads [autofocus] checked: determines if the input will be checked by default [checked] disabled: prevents the input from being pressed [disabled] form: used to explicitly associate the button element with its form owner formaction: URL that specifies a form processing agent formenctype: specifies the content type used to submit the form to the server [application/x-www-form-urlencoded multipart/form-data text/plain] formmethod: which HTTP method will be used to submit the forms data [get post put delete] formnovalidate: indicate whether the form is to be validated during submission [formnovalidate] formtarget: gives the target when the form is submitted [_blank _parent _self _top] height: height of the input in pixels list: used to identify an element that lists predefined options suggested to the user max and max: indicate the allowed range of values for the element maxlength: controls the maxlength of the input to a control multiple: indicates whether the user is to be allowed to specify more than one value [multiple] name: elements name pattern: specifies a regular expression against which the control's value is to be checked placeholder: a short hint intended to aid the user with data entry readonly: determines if the control is readonly [readonly] required: determines if the input is required before the form submits [required] size: gives the number of characters that, in a visual rendering, the user agent is to allow the user to see while editing src: URL to an image (image button) step: indicates the granularity that is expected (and required) of the value type: controls the data type (and associated control) of the element [hidden text search tel url email password datetime date month week time datetime-local number range color checkbox radio file submit image reset button] value: sets the element's value width: width of the input in pixels
<dl>	definition list: an association list consisting of zero or more name-value groups (a description list). Each group must consist of one or more names (dt elements) followed by one or more values (dd elements)	global attributes**			
<dt>	definition term: the term, or name, part of a term-description group in a description list (dl element), and the talker, or speaker, part of a talker-discourse pair in a conversation (dialog element)	global attributes**			
	emphasized text: represents stress emphasis of its contents.	global attributes**			
<embed>	embed element: an external (typically non-HTML) application or interactive content	src: URL of the resource being embedded type: gives the MIME type of the plugin to instantiate height: height of the embedded content in pixels width: width of the embedded content in pixels			
<fieldset>	fieldset element: a set of form controls grouped under a common name	disabled: controls whether all the form control descendants are disabled [disabled] form: used to explicitly associate the fieldset element with its form owner name: gives the name of the form control			
<figure>	figure element: some flow content, optionally with a caption, that is self-contained and is typically referenced as a single unit from the main flow of the document	global attributes**			
<footer>	footer element: represents a footer for the section it applies to	global attributes**			
<form>	form element: represents a collection of form-associated elements, some of which can represent editable values that can be submitted to a server for processing	accept-charset: gives the character encodings that are to be used for the submission action: URL that specifies a form processing agent autocomplete: determines if form elements will have their autocomplete turned on or off by default [on off] enctype: specifies the content type used to submit the form to the server [application/x-www-form-urlencoded multipart/form-data text/plain] method: which HTTP method will be used to submit the forms data [get post put delete] name: elements name novalidate: indicate whether the form is to be validated during submission [novalidate] target: gives the target when the form is submitted [_blank _parent _self _top]			
<h1> to <h6>	headers (1-6): represent headings for their sections. elements have a rank given by the number in their name	global attributes**	<ins>	inserted text: an addition to the document	cite: a URL used to specify the address of a document that explains the change datetime: used to specify the time and date of the change
<head>	head element: contains information about the document	none	<kbd>	keyboard text: user input (typically keyboard input, although it may also be used to represent other input, such as voice commands)	global attributes**
<header>	header element: represents a group of introductory or navigational aids	global attributes**	<label>	label: caption in a user interface	for: specified to indicate a form control with which the caption is to be associated
<hgroup>	heading group: used to group a set of h1-h6 elements when the heading has multiple levels, such as subheadings, alternative titles, or taglines	global attributes**	<legend>	fieldset title: sets the title of a fieldset element	global attributes**
<hr>	horizontal rule: creates a horizontal rule (line)	global attributes**		list item: represents a list item of an Ordered (OL) or Unordered list (UL)	value: used in an Ordered List (OL) to set the display value
<html>	html document: root of an HTML document.	manifest: a URL to the address of the document's application cache manifest	<link>	resource link: allows authors to link their document to other resources	href: destination resource of the hyperlink rel: relationship between the document containing the hyperlink and the destination resource [alternate archives author bookmark contact external feed first help icon index last license next nofollow noreferer pingback prefetch prev search stylesheet sidebar tag up] media: describes for which media the target document was designed hreflang: gives the language of the linked resource type: gives the MIME type of the linked resource sizes: gives the sizes of icons for visual media.
<i>	italic text: indicates the text is to be rendered with emphasis	global attributes**			
<iframe>	inline frame: represents a nested browsing window	src: URL of a page that the nested browsing context is to contain name: elements name sandbox: enables a set of extra restrictions on any content hosted by the iframe [allow-same-origin allow-forms allow-scripts] seamless: indicates whether the iframe element's browsing context is to be rendered in a manner that makes it appear to be part of the containing document [seamless] height: height of the frame in pixels width: width of the frame in pixels			
	image: represents an image	alt: text to display if the image can not src: a URL to the image file usemap: name of the map to use for the image ismap: provides access to a server-side image map height: height of the image in pixels width: width of the image in pixels	<mark>	marked text: a run of text in one document marked or highlighted for reference purposes, due to its relevance in another context.	global attributes**
			<map>	image map: in conjunction with any area element descendants, defines an image map	name: gives the map a name so that it can be referenced
			<menu>	menu list: a list of commands	label: sets a visible label for the menu type: indicates the kind of menu being declared [context toolbar list]

HTML 5 - extended

Tag	Info	Attributes
<meta>	meta information: sets meta information for the page (like title, description)	charset: specifies the character encoding used by the document content: sets the value of the document metadata http-equiv: sets a pragma directive [<i>content-language</i> <i>content-type</i> <i>default-style</i> <i>refresh</i>] name: set the name of the meta information
<meter>	meter element: scalar measurement within a known range, or a fractional value	high: specifies the range that is considered to be the "high" part low: specifies the range that is considered to be the "low" part min: specifies the lower boundary max: specifies the upper boundary optimum: specifies the range that is considered to be the "optimum" part value: current location within the range
<nav>	navigation element: section of a page that links to other pages or to parts within the page: a section with navigation links	<i>global attributes**</i>
<noscript>	noscript section: represents nothing if scripting is enabled, and represents its children if scripting is disabled	<i>global attributes**</i>
<object>	embedded object: an external resource, which, depending on the type of the resource, will either be treated as an image, as a nested browsing context, or as an external resource to be processed by a plugin	data: specifies the address of the resource name: valid browsing context name usemap: name of the map to use for the image form: form to associate the object with type: gives the MIME type of the plugin to instantiate height: height of the embedded content in pixels width: width of the embedded content in pixels
	ordered list: list of items, where the items have been intentionally ordered	start: the ordinal value of the first list item reversed: indicates that the list is a descending list [<i>reversed</i>]
<optgroup>	option group: a group of option elements with a common label	disabled: disables all options in the group [<i>disabled</i>] label: gives the name of the group, as shown to the user
<option>	option element: an option in a select element or as part of a list of suggestions in a datalist element	disabled: prevent any clicks on an option item [<i>disabled</i>] label: provides a label for element selected: determines if the option is selected by default [<i>selected</i>] value: provides a value for element
<output>	output element: the result of a calculation	form: used to explicitly associate the output element with its form owner for: allows an explicit relationship to be made between the result of a calculation and the elements that represent the values that went into the calculation or that influenced the calculation
<p>	paragraph: creates a paragraph	<i>global attributes**</i>
<param>	parameter element: defines parameters for plugins invoked by object elements. It does not represent anything on its own	name: gives the name of the parameter. value: gives the value of the parameter.
<pre>	preformatted text: represents a block of preformatted text	<i>global attributes**</i>
<progress>	progress element: represents the completion progress of a task.	max: specifies how much work the task requires in total value: specifies how much of the task has been completed
<q>	short quotation: phrasing content quoted from another source	cite: a URL of a page where the quote was taken from
<ruby>	ruby annotations: allows one or more spans of phrasing content to be marked with ruby annotations	<i>global attributes**</i>
<rp>	ruby text parentheses: can be used to provide parentheses around a ruby text component of a ruby annotation	<i>global attributes**</i>
<rt>	ruby text component: marks the ruby text component of a ruby annotation	<i>global attributes**</i>
<samp>	sample: sample output from a program or computing system.	<i>global attributes**</i>
<script>	script element: allows authors to include dynamic script and data blocks in their documents	async: the script will be executed asynchronously, as soon as it is available [<i>async</i>] type: gives the MIME type of the script or format of the data defer: the script is executed when the page has finished parsing [<i>defer</i>] src: gives the address of the external script resource to use charset: specifies the character encoding of the external script resource
<section>	section element: represents a generic document or application section	cite: a URL of a page where the section was taken from

Tag	Info	Attributes
<select>	selectable list: a control for selecting amongst a set of options	autofocus: determines if the controls gets focus when the page loads [<i>autofocus</i>] disabled: prevent the selection of an item [<i>disabled</i>] form: form to associate the select with multiple: allows the selection of multiple items [<i>multiple</i>] size: gives the number of options to show to the user
<small>	small text: small print or other side comments	<i>global attributes**</i>
<source>	source element: allows authors to specify multiple media resources for media elements.	media: gives the intended media type of the media resource src: URL of the media resource type: gives the MIME type of the source
	span: used for an inline element	<i>global attributes**</i>
	strong: represents strong importance for its contents	<i>global attributes**</i>
<style>	style definition: allows authors to embed style information in their documents	media: says which media the styles apply to type: gives the MIME type (default: text/css) scoped: indicates that the styles are intended just for the subtree rooted at the style element's parent element [<i>scoped</i>]
<sub>	subscript: subscript text	<i>global attributes**</i>
<sup>	superscript: superscript text	<i>global attributes**</i>
<table>	table element: represents data with more than one dimension, in the form of a table	<i>global attributes**</i>
<tbody>	table body: represents a block of rows that consist of a body of data for a table	<i>global attributes**</i>
<td>	table cell: represents a data cell in a table	colspan: sets how many columns a cell will span rowspan: sets how many rows a cell will span headers: space separated list of ids corresponding to the th ids and give header information for the cell
<textarea>	text area: a multiline plain text edit control for the element's raw value	autofocus: determines if the textarea gets focus when the page loads [<i>autofocus</i>] cols: specifies the expected maximum number of characters per line disabled: prevents entry of text [<i>disabled</i>] form: form to associate the textarea with readonly: control whether the text can be edited by the user or not [<i>readonly</i>] required: will be required to enter a value before submitting the form [<i>required</i>] rows: specifies the number of lines to show maxlength: controls the maximum amount of characters which can be entered placeholder: a hint intended to aid the user with data entry wrap: defines how text is wrapped [<i>soft</i> <i>hard</i>]
<tfoot>	table footer: the block of rows that consist of the column summaries (footers) for a table	<i>global attributes**</i>
<th>	table header: represents a header cell in a table	colspan: determines how many columns a cell will span rowspan: determines how many rows a cell will span headers: space separated list of ids corresponding to the th ids and give header information for the cell scope: determines where the cell provides its header information [<i>col</i> <i>colgroup</i> <i>row</i> <i>rowgroup</i>]
<thead>	table header: the block of rows that consist of the column labels (headers) for a table	<i>global attributes**</i>
<time>	date/time: a precise date and/or a time in the Gregorian calendar	datetime: date/time using the Gregorian calendar
<title>	title element: sets the title of the document	none
<tr>	table row: a row of cells in a table	<i>global attributes**</i>
	unordered list: a list of items, where the order of the items is not important	<i>global attributes**</i>
<var>	variable: this could be an actual variable in a mathematical expression or programming context	<i>global attributes**</i>
<video>	video element: a video or movie	poster: URL of an image file that the user agent can show while no video data is available autoplay: determines if the audio will be buffered [<i>autoplay</i>] controls: indicates that the author has not provided a scripted controller and would like the user agent to provide its own set of controls [<i>controls</i>] loop: sets whether the audio will start once the end is reached [<i>loop</i>] src: URL of the audio to play width: width of the video in pixels height: height of the video in pixels

Cascading Style Sheets (CSS 3)

BACKGROUND	
background	<i>background-image background-position background-size background-repeat background-attachment background-origin background-clip background-color</i>
background-attachment	scroll fixed
background-break	bounding-box each-box continuous
background-clip	<i>length % border-box padding-box content-box no-clip</i>
background-color	<i>color transparent</i>
background-image	<i>url none</i>
background-origin	border-box padding-box content-box
background-position	top left top center top right center left center center center right bottom left bottom center bottom right <i>x-% y-% x-pos y-pos</i>
background-repeat	repeat repeat-x repeat-y no-repeat
background-size	<i>length % auto cover contain</i>
BORDER	
border	<i>border-width border-style border-color</i>
border-break	<i>border-width border-style color close</i>
border-bottom	<i>border-bottom-width border-style border-color</i>
border-bottom-color	<i>border-color</i>
border-bottom-style	<i>border-style</i>
border-bottom-width	thin medium thick <i>length</i>
border-collapse	collapse separate
border-color	<i>color</i>
border-image	<i>image [number / % border-width stretch repeat round] none</i>
border-left	<i>border-left-width border-style border-color</i>
border-left-color	<i>border-color</i>
border-left-style	<i>border-style</i>
border-left-width	thin medium thick <i>length</i>
border-right	<i>border-right-width border-style border-color</i>
border-right-color	<i>border-color</i>
border-right-style	<i>border-style</i>
border-right-width	thin medium thick <i>length</i>

BORDER	
border-top	<i>border-top-width border-style border-color</i>
border-top-color	<i>border-color</i>
border-top-style	<i>border-style</i>
border-top-width	thin medium thick <i>length</i>
border-width	thin medium thick <i>length</i>
border-radius	<i>border-top-right-radius border-bottom-right-radius border-bottom-left-radius border-top-left-radius</i>
border-top-right-radius	<i>length</i>
border-bottom-right-radius	<i>length</i>
border-bottom-left-radius	<i>length</i>
border-top-left-radius	<i>length</i>
box-shadow	<i>inset [length, length, length, length <color>] none</i>
border-style	none hidden dotted dashed solid double groove ridge inset outset
FONT	
font	<i>font-style font-variant font-weight font-size/line-height font-family caption icon menu message-box small-caption status-bar</i>
font-family	<i>family-name generic-family inherit</i>
font-size	xx-small x-small small medium large x-large xx-large smaller larger inherit <i>length %</i>
font-size-adjust	none inherit <i>number</i>
font-stretch	normal wider narrower ultra-condensed extra-condensed condensed semi-condensed semi-expanded expanded extra-expanded ultra-expanded inherit
font-style	normal italic oblique inherit
font-variant	normal small-caps inherit
font-weight	normal bold bolder lighter 100 200 300 400 500 600 700 800 900 inherit
BOX MODEL	
clear	left right both none
display	none inline block inline-block list-item run-in compact table inline-table table-row-group table-header-group table-footer-group table-row table-column-group table-column table-cell table-caption ruby ruby-base ruby-text ruby-base-group ruby-text-group

BOX MODEL	
float	left right none
height	auto <i>length %</i>
max-height	none <i>length %</i>
max-width	none <i>length %</i>
min-height	none inherit <i>length %</i>
min-width	none inherit <i>length %</i>
width	auto <i>% length</i>
margin	<i>margin-top margin-right margin-bottom margin-left</i>
margin-bottom	auto <i>length %</i>
margin-left	auto <i>length %</i>
margin-right	auto <i>length %</i>
margin-top	auto <i>length %</i>
padding	<i>padding-top padding-right padding-bottom padding-left</i>
padding-bottom	<i>length %</i>
padding-left	<i>length %</i>
padding-right	<i>length %</i>
padding-top	<i>length %</i>
marquee-direction	forward reverse
marquee-loop	infinite <i>number</i>
marquee-play-count	infinite <i>integer</i>
marquee-speed	slow normal fast
marquee-style	scroll slide alternate
overflow	visible hidden scroll auto no-display no-content <i>overflow-x overflow-y</i>
overflow-style	auto marquee-line marquee-block
overflow-x	visible hidden scroll auto no-display no-content
overflow-y	visible hidden scroll auto no-display no-content
rotation	<i>angle</i>
rotation-point	<i>position (paired value off-set)</i>
visibility	visible hidden collapse

Cascading Style Sheets (CSS 3)

TEXT	
direction	ltr rtl inherit
hanging-punctuation	none [start end end-edge]
letter-spacing	normal <i>length</i> %
punctuation-trim	none [start end adjacent]
text-align	start end left right center justify
text-align-last	start end left right center justify
text-decoration	none underline overline line-through blink
text-emphasis	none [[accent dot circle disc] [before after]?]
text-indent	<i>length</i> %
text-justify	auto inter-word inter-ideograph inter-cluster distribute kashida tibetan
text-outline	none <i>color</i> <i>length</i>
text-shadow	none <i>color</i> <i>length</i>
text-transform	none capitalize uppercase lowercase
text-wrap	normal unrestricted none suppress
unicode-bidi	normal embed bidi-override
white-space	normal pre nowrap pre-wrap pre-line
white-space-collapse	preserve collapse preserve-breaks discard
word-break	normal keep-all loose break-strict break-all
word-spacing	normal <i>length</i> %
word-wrap	normal break-word
COLUMN	
column-count	auto <i>number</i>
column-fill	auto balance
column-gap	normal <i>length</i>
column-rule	<i>column-rule-width</i> <i>column-rule-style</i> <i>column-rule-color</i>
column-rule-color	<i>color</i>
column-rule-style	<i>border-style</i>
column-rule-width	thin medium thick <i>length</i>
columns	<i>column-width</i> <i>column-count</i>
column-span	1 all
column-width	auto <i>length</i>
COLOR	
color	inherit <i>color</i>
opacity	inherit <i>number</i>

TEMPLATE LAYOUT	
box-align	start end center base-
box-direction	normal reverse
box-flex	<i>number</i>
box-flex-group	<i>integer</i>
box-lines	single multiple
box-orient	horizontal vertical inline-axis block-axis
box-pack	start end center justify
box-sizing	content-box padding-box border-box margin-box
tab-side	top bottom left right
TABLE	
border-collapse	collapse separate
border-spacing	<i>length</i> <i>length</i>
caption-side	top bottom left right
empty-cells	show hide
table-layout	auto fixed
SPEECH	
cue	<i>cue-before</i> <i>cue-after</i>
cue-before	<i>uri</i> [silent x-soft soft medium loud x-loud] none inherit <i>number</i> %
cue-after	<i>uri</i> [silent x-soft soft medium loud x-loud] none inherit <i>number</i> %
mark	<i>mark-before</i> <i>mark-after</i>
mark-before	<i>string</i>
mark-after	<i>string</i>
pause	<i>pause-before</i> <i>pause-after</i>
pause-before	none x-weak weak medium strong x-strong inherit <i>time</i>
pause-after	none x-weak weak medium strong x-strong inherit <i>time</i>
phonemes	<i>string</i>
rest	<i>rest-before</i> <i>rest-after</i>
rest-before	none x-weak weak medium strong x-strong inherit <i>time</i>
rest-after	none x-weak weak medium strong x-strong inherit <i>time</i>
speak	none normal spell-out digits literal-punctuation no-punctuation inherit
voice-balance	left center right leftwards rightwards inherit <i>number</i>
voice-duration	<i>time</i>

SPEECH	
voice-family	inherit [<specific-voice, age, generic-voice, number>]
voice-rate	x-slow slow medium fast x-fast inherit %
voice-pitch	x-low low medium high x-high inherit <i>number</i> %
voice-pitch-range	x-low low medium high x-high inherit <i>number</i>
voice-stress	strong moderate none reduced inherit
voice-volume	silent x-soft soft medium loud x-loud inherit <i>number</i> %
LIST & MARKERS	
list-style	<i>list-style-type</i> <i>list-style-position</i> <i>list-style-image</i>
list-style-image	none <i>url</i>
list-style-position	Inside outside
list-style-type	none asterisks box check circle diamond disc hyphen square decimal decimal-leading-zero lower-roman upper-roman lower-alpha upper-alpha lower-greek lower-latin upper-latin hebrew armenian georgian cjk-ideographic hiragana katakana hiragana-iroha katakana-iroha footnotes
marker-offset	auto <i>length</i>
ANIMATIONS	
animation	<i>animation-name</i> <i>animation-duration</i> <i>animation-timing-function</i> <i>animation-delay</i> <i>animation-iteration-count</i> <i>animation-direction</i>
animation-delay	<i>time</i>
animation-direction	normal alternate
animation-duration	<i>time</i>
animation-iteration-count	inherit <i>number</i>
animation-name	none IDENT
animation-play-state	running paused
animation-timing-function	ease linear ease-in ease-out ease-in-out cubic-Bezier (<i>number</i> , <i>number</i> , <i>number</i> , <i>number</i>)
TRANSITIONS	
transition	<i>transition-property</i> <i>transition-duration</i> <i>transition-timing-function</i> <i>transition-delay</i>
transition-delay	<i>time</i>
transition-duration	<i>time</i>
transition-property	none all
transition-timing-function	ease linear ease-in ease-out ease-in-out cubic-Bezier (<i>number</i> , <i>number</i> , <i>number</i> , <i>number</i>)

Cascading Style Sheets (CSS 3)

PAGED MEDIA	
fit	fill hidden meet slice
fit-position	[top center bottom] [left center right] <i>length</i> %
image-orientation	auto <i>angle</i>
orphans	<i>integer</i>
page	auto <i>identifier</i>
page-break-after	auto always avoid left right
page-break-before	auto always avoid left right
page-break-inside	auto avoid
size	auto landscape portrait <i>length</i>
windows	<i>integer</i>
UI	
appearance	normal inherit [icon window desktop workspace document tooltip dialog button push-button hyperlink radio-button checkbox menu-item tab menu menubar pull-down-menu pop-up-menu list-menu radio-group checkbox-group outline-tree range field combo-box signature password]
cursor	auto crosshair default pointer move e-resize ne-resize nw-resize n-resize se-resize sw-resize s-resize w-resize text wait help <i>url</i>
icon	auto inherit <i>url</i>
nav-index	auto inherit <i>number</i>
nav-up	auto inherit <id> [<i>current</i> root <target-name>]
nav-right	auto inherit <id> [<i>current</i> root <target-name>]
nav-down	auto inherit <id> [<i>current</i> root <target-name>]
nav-left	auto inherit <id> [<i>current</i> root <target-name>]
resize	none both horizontal vertical inherit

- Values in *italics* are place holders for an actual value (like 1px, 1em, 1%), values in normal text are values that can be used as the actual value
- CSS Properties in **Dark Red** are shorthand properties and each value must be defined. The exception is where the property can define from one to four of the sides of a box element property (Top-Right-Bottom-Left) - i.e. border-width

Cascading Style Sheets (CSS 3)

GRID POSITIONING

grid-columns	none inherit [length percentage relative length]
grid-rows	none inherit [length percentage relative length]

OUTLINE

outline	outline-color outline-style outline-width
outline-color	color invert
outline-offset	inherit length
outline-style	None dotted dashed solid double groove ridge inset outset
outline-width	thin medium thick length

3D / 2D TRANSFORM

backface-visibility	visible hidden
perspective	none number
perspective-origin	[[[percentage > <length> left center right] [<percentage> <length> top center bottom]?] <length>] [[[left center right] [top center bottom]]] <length>]
transform	none matrix matrix3d translate3d translateX translateY translateZ scale scale3d scaleX scaleY scaleZ rotate rotate3d rotateX rotateY rotateZ skewX skewY skew perspective
transform-origin	[[[<percentage> <length> left center right] [<percentage> <length> top center bottom]?] <length>] [[[left center right] [top center bottom]]] <length>]
transform-style	flat preserve-3d

GENERATED CONTENT

bookmark-label	content attr string
bookmark-level	none integer
bookmark-target	self uri attr
border-length	auto length
content	normal none inhibit uri
counter-increment	none identifier number
counter-reset	none identifier number
crop	auto shape
display	normal none list-item
float-offset	length length

GENERATED CONTENT

hyphenate-after	auto integer
hyphenate-before	auto integer
hyphenate-character	auto string
hyphenate-lines	no-limit integer
hyphenate-resource	none uri
hyphens	none manual auto
image-resolution	normal auto dpi
marks	[crop cross] none
move-to	normal here identifier
page-policy	start first last
quotes	none string string string string
string-set	identifier content-list
text-replace	none [<string> <string>]+

LINE BOX

alignment-adjust	auto baseline before-edge text-before-edge middle central after-edge text-after-edge ideographic alphabetic hanging mathematical length %
alignment-baseline	baseline use-script before-edge text-before-edge after-edge text-after-edge central middle ideographic alphabetic hanging mathematical
baseline-shift	baseline sub super length %
dominant-baseline	auto use-script no-change reset-size alphabetic hanging ideographic mathematical central middle text-after-edge text-before-edge
drop-initial-after-align	alignment-baseline
drop-initial-after-adjust	central middle after-edge text-after-edge ideographic alphabetic mathematical length %
drop-initial-before-align	caps-height alignment-baseline
drop-initial-before-adjust	before-edge text-before-edge central middle hanging mathematical length %
drop-initial-value	initial integer
drop-initial-size	auto integer % line
inline-box-align	initial last integer

LINE BOX

line-height	normal number length %
line-stacking	line-stacking-strategy line-stacking-ruby line-stacking-shift
line-stacking-strategy	inline-line-height block-line-height max-height grid-height
line-stacking-ruby	exclude-ruby include-ruby
line-stacking-shift	consider-shifts disregard-shifts
text-height	auto font-size text-size max-size
vertical-align	Baseline sub super top text-top middle bottom text-bottom length %

HYPERLINK

target	target-name target-new target-position
target-name	current root parent new modal string
target-new	window tab none
target-position	above behind front back

POSITIONING

bottom	auto % length
clip	shape auto
left	auto % length
position	static relative absolute fixed
right	auto % length
top	auto % length
z-index	auto number

RUBY

ruby-align	auto start left center end right distribute-letter distribute-space line-edge
ruby-overhang	auto start end none
ruby-position	before after right inline
ruby-span	attr(x) none

Cascading Style Sheets (CSS 3)

PSEUDO-CLASS

:active	an activated element
:focus	an element while the element has focus
:visited	a visited link
:hover	an element when you mouse over it
:link	an unvisited link
:disabled	an element while the element is disabled
:enabled	an element while the element is enabled
:checked	an element (form element control) that is checked
:selection	an element that is currently selected of highlighted by the user
:lang	Allows the author to specify a language to use in a specified element
:nth-child(n)	an element that is the n-th sibling
:nth-last-child(n)	an element that is the n-th sibling counting from the last sibling
:first-child	an element that is the first sibling
:last-child	an element that is the last sibling
:only-child	an element that is the only child
:nth-of-type(n)	an element that is the n-th sibling of its type.
:nth-last-of-type(n)	an element that is the n-th sibling of its type counting from the last sibling
:last-of-type	an element that is the first sibling of its type
:first-of-type	an element that is the last sibling of its type
:only-of-type	an element that is the only child of that type
:empty	an element that has no children
:root	root element within the document
:not(x)	an element not represented by the argument 'x'
:target	a target element as specified by a target in a URI

PSEUDO-ELEMENT

::first-letter	Adds special style to the first letter of a text
::first-line	Adds special style to the first line of a text
::before	Inserts some content before an element
::after	Inserts some content after an element

UNITS

ABSOLUTE MEASUREMENT

%	percentage
cm	centimeter
in	inch
mm	millimeter
pc	pica (1p = 12 points)
pt	point (1pt = 1/72 inch)

RELATIVE MEASUREMENT

ch	width of the "0" glyph found in the font for the font size used to render
em	1em = current font size of current element
ex	x-height of the element's font
gd	the grid defined by 'layout-grid'
px	pixel of the viewing device
rem	the font size of the root element
vh	the viewport's height
vw	the viewport's width
vm	viewport's height or width, whichever is smaller of the two

ANGLES

deg	degrees
grad	grads
rad	radians
turn	turns

TIME

ms	milli-seconds
s	seconds

FREQUENCY

Hz	hertz
kHz	kilo-hertz

COLORS

color name	red, blue, green, dark green
rgb(x,y,z)	red = rgb(255,0,0)
rgb(x%,y%,z%)	red = rgb(100%,0,0)
rgba(x,y,z, alpha)	red = rgba(255,0,0)
#rrggbb	red = #ff0000 (or shorthand = #f00)
hsl(hue, saturation, lightness)	red = hsl(0, 100%, 50%)
hsla(hue, saturation, lightness, alpha)	red = hsl(0, 100%, 50%)
flavor	An accent color (typically chosen by the user) to customize the user interface of the user agent itself
currentColor	computed value of the 'currentColor' keyword is the computed value of the 'color' property

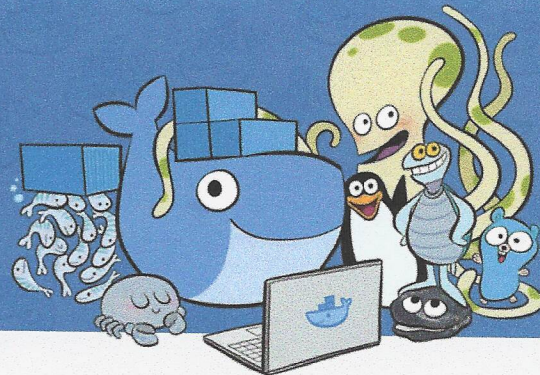
SELECTOR TYPES

Name	Info	Example
Universal	Any element	* { font: 10px Arial; }
Type	Any element of that type	h1 { text-decoration: underline; }
Grouping	Multiple elements of different types	h1, h2, h3 { font-family: Verdana; }
Class	Multiple elements of different types when you don't want to affect all instances of that type	.sampleclass { text-decoration: underline; }
Id	A single element type when you don't want to affect all instances of that type	#sampleid { text-decoration: underline; }
Descendant	An element that is below (in the document tree) another element—no matter how many levels below	#gallery h1 { text-decoration: underline; }
Child	An element that is directly below (in the document tree) another element	#title > p { font-weight: bold; }
Adjacent Sibling	All elements that share the same parent and elements are in the same immediate sequence	h1 + p { font-style: italic; }
General Sibling	All elements that share the same parent and elements are in the same sequence (not necessarily immediate)	h1 ~ p { font-style: italic; }
Attribute	An element with that matches the attribute listed	E[selected] - att whatever the value E[att="val"] - att with a specific value E[rel~="next"] - att with a value is a whitespace separated list *[lang="en"] - att value either being exactly "val" or beginning with "val" immediately followed by "-" E[att^="val"] - att value that begins with the prefix "val" E[att\$="val"] - att value that end with the suffix "val" E[att*="val"] - att value contains at least one instance of the substring "val"

Date		Description		Amount	
1917	Jan 1	Balance		100.00	
	Jan 15	Interest		5.00	
	Feb 1	Interest		5.00	
	Feb 15	Interest		5.00	
	Mar 1	Interest		5.00	
	Mar 15	Interest		5.00	
	Apr 1	Interest		5.00	
	Apr 15	Interest		5.00	
	May 1	Interest		5.00	
	May 15	Interest		5.00	
	Jun 1	Interest		5.00	
	Jun 15	Interest		5.00	
	Jul 1	Interest		5.00	
	Jul 15	Interest		5.00	
	Aug 1	Interest		5.00	
	Aug 15	Interest		5.00	
	Sep 1	Interest		5.00	
	Sep 15	Interest		5.00	
	Oct 1	Interest		5.00	
	Oct 15	Interest		5.00	
	Nov 1	Interest		5.00	
	Nov 15	Interest		5.00	
	Dec 1	Interest		5.00	
	Dec 15	Interest		5.00	
	1918	Jan 1	Balance	100.00	
	Jan 15	Interest		5.00	
	Feb 1	Interest		5.00	
	Feb 15	Interest		5.00	
	Mar 1	Interest		5.00	
	Mar 15	Interest		5.00	
	Apr 1	Interest		5.00	
	Apr 15	Interest		5.00	
	May 1	Interest		5.00	
	May 15	Interest		5.00	
	Jun 1	Interest		5.00	
	Jun 15	Interest		5.00	
	Jul 1	Interest		5.00	
	Jul 15	Interest		5.00	
	Aug 1	Interest		5.00	
	Aug 15	Interest		5.00	
	Sep 1	Interest		5.00	
	Sep 15	Interest		5.00	
	Oct 1	Interest		5.00	
	Oct 15	Interest		5.00	
	Nov 1	Interest		5.00	
	Nov 15	Interest		5.00	
	Dec 1	Interest		5.00	
	Dec 15	Interest		5.00	
	1919	Jan 1	Balance	100.00	
	Jan 15	Interest		5.00	
	Feb 1	Interest		5.00	
	Feb 15	Interest		5.00	
	Mar 1	Interest		5.00	
	Mar 15	Interest		5.00	
	Apr 1	Interest		5.00	
	Apr 15	Interest		5.00	
	May 1	Interest		5.00	
	May 15	Interest		5.00	
	Jun 1	Interest		5.00	
	Jun 15	Interest		5.00	
	Jul 1	Interest		5.00	
	Jul 15	Interest		5.00	
	Aug 1	Interest		5.00	
	Aug 15	Interest		5.00	
	Sep 1	Interest		5.00	
	Sep 15	Interest		5.00	
	Oct 1	Interest		5.00	
	Oct 15	Interest		5.00	
	Nov 1	Interest		5.00	
	Nov 15	Interest		5.00	
	Dec 1	Interest		5.00	
	Dec 15	Interest		5.00	
	1920	Jan 1	Balance	100.00	
	Jan 15	Interest		5.00	
	Feb 1	Interest		5.00	
	Feb 15	Interest		5.00	
	Mar 1	Interest		5.00	
	Mar 15	Interest		5.00	
	Apr 1	Interest		5.00	
	Apr 15	Interest		5.00	
	May 1	Interest		5.00	
	May 15	Interest		5.00	
	Jun 1	Interest		5.00	
	Jun 15	Interest		5.00	
	Jul 1	Interest		5.00	
	Jul 15	Interest		5.00	
	Aug 1	Interest		5.00	
	Aug 15	Interest		5.00	
	Sep 1	Interest		5.00	
	Sep 15	Interest		5.00	
	Oct 1	Interest		5.00	
	Oct 15	Interest		5.00	
	Nov 1	Interest		5.00	
	Nov 15	Interest		5.00	
	Dec 1	Interest		5.00	
	Dec 15	Interest		5.00	



CLI Cheat Sheet



Docker provides the ability to package and run an application in a loosely isolated environment called a container. The isolation and security allows you to run many containers simultaneously on a given host. Containers are lightweight and contain everything needed to run the application, so you do not need to rely on what is currently installed on the host. You can easily share containers while you work, and be sure that everyone you share with gets the same container that works in the same way.

INSTALLATION

Docker Desktop is available for Mac, Linux and Windows
<https://docs.docker.com/desktop>

View example projects that use Docker
<https://github.com/docker/awesome-compose>

Check out our docs for information on using Docker
<https://docs.docker.com>

IMAGES

Docker images are a lightweight, standalone, executable package of software that includes everything needed to run an application: code, runtime, system tools, system libraries and settings.

Build an image from a Dockerfile
`docker build -t <image_name> .`

Build an image from a Dockerfile without the cache
`docker build -t <image_name> . --no-cache`

List local images
`docker images`

Delete an image
`docker rmi <image_name>`

Remove all unused images
`docker image prune`

DOCKER HUB

Docker Hub is a service provided by Docker for finding and sharing container images with your team. Learn more and find images at <https://hub.docker.com>

Login into Docker
`docker login -u <username>`

Publish an image to Docker Hub
`docker push <username>/<image_name>`

Search Hub for an image
`docker search <image_name>`

Pull an image from a Docker Hub
`docker pull <image_name>`

GENERAL COMMANDS

Start the docker daemon
`docker -d`

Get help with Docker. Can also use -help on all subcommands
`docker --help`

Display system-wide information
`docker info`

CONTAINERS

A container is a runtime instance of a docker image. A container will always run the same, regardless of the infrastructure. Containers isolate software from its environment and ensure that it works uniformly despite differences for instance between development and staging.

Create and run a container from an image, with a custom name:
`docker run --name <container_name> <image_name>`

Run a container with and publish a container's port(s) to the host.
`docker run -p <host_port>:<container_port> <image_name>`

Run a container in the background
`docker run -d <image_name>`

Start or stop an existing container:
`docker start|stop <container_name> (or <container-id>)`

Remove a stopped container:
`docker rm <container_name>`

Open a shell inside a running container:
`docker exec -it <container_name> sh`

Fetch and follow the logs of a container:
`docker logs -f <container_name>`

To inspect a running container:
`docker inspect <container_name> (or <container_id>)`

To list currently running containers:
`docker ps`

List all docker containers (running and stopped):
`docker ps --all`

View resource usage stats
`docker container stats`

